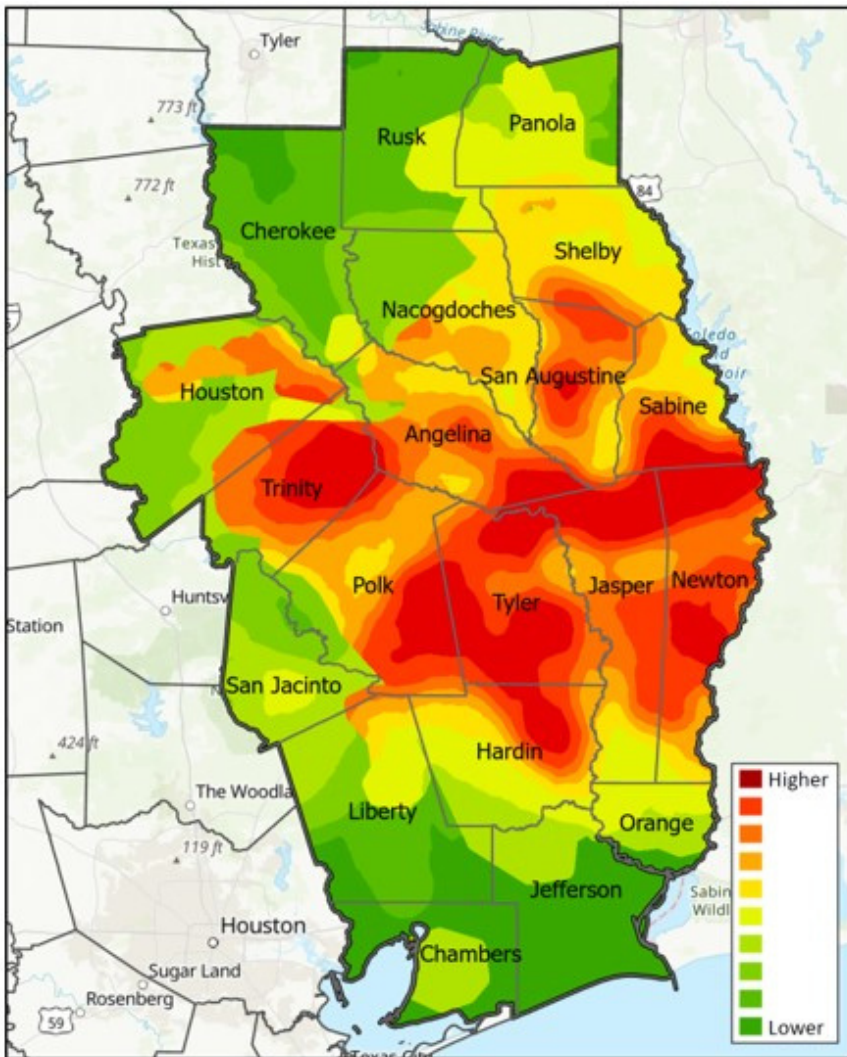


# Texas Longleaf Team

## FINANCIAL ASSISTANCE AVAILABLE

For Forest Landowners



**Texas Longleaf Conservation Assistance Program Priority Map**

## Cost-Share

Approved participants will receive cost share on approved practices based on ~50% of average industry rates (full list can be found at [www.txlongleaf.org](http://www.txlongleaf.org)):

**Prescribed Burning - \$30/ac**

**Site Preparation/Planting - \$215/ac + FREE seedlings**

**Forest Stand Improvement - \$165/ac**

## WHY LONGLEAF?

### *Asset Protection & Resilience*

Because Longleaf thrives on prescribed fire, it is more resistant to wildfire than other southern pine species. It is also more resistant to insects and wind events!

### *Wildlife Value*

Longleaf thrives on prescribed fire, which stimulates the growth of important understory plants and promotes habitat conditions critical for many wildlife species, including white-tailed deer, wild turkey, bobwhite quail and more!

### *Value from Wood Products*

Longleaf is known for producing great quality lumber with superior strength, durability and appearance. In addition to providing pulp wood from thinning, a well-managed longleaf stand can produce excellent quality utility poles starting at age 30 - 35. Trees sold for utility poles provide much higher prices than trees sold for saw logs.

### *Legacy*

A longleaf forest is a multi-use forest that keeps on giving for generations. Once established, longleaf will regenerate naturally, creating a multi-age forest that can be selectively harvested over time to generate income, while simultaneously providing wildlife habitat and recreational opportunities.

**Contact Jenny Sanders, Texas Team Coordinator, to learn more [jennyreenesanders@gmail.com](mailto:jennyreenesanders@gmail.com) | (936) 225-2175 [www.txlongleaf.org](http://www.txlongleaf.org)**



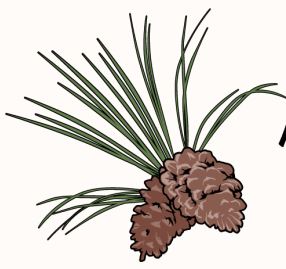
NFWF

INTERNATIONAL



PAPER





# Texas Longleaf Team

## TEXAS LONGLEAF CONSERVATION ASSISTANCE PROGRAM

Simple Process - Significant Impact

### STEP 1: CONTACT



(936) 225-2175 | [jennyreenesanders@gmail.com](mailto:jennyreenesanders@gmail.com)

If your property falls within the 19-county historic range of the Longleaf pine, contact Longleaf Team Coordinator, Jenny Sanders. We will visit about your property, management goals, and determine your eligibility for financial incentives. We want to work with you!

### STEP 2. SITE VISIT

#### AS MUTUALLY CONVENIENT

We will schedule a time for one of our project managers to come out to take photos of the site, evaluate the current condition, and help with project planning if needed.



### STEP 3: APPLY

#### APPLICATION DEADLINES:

**APRIL 15 & SEPTEMBER 30, ANNUALLY**

Your project manager will work with you to develop an application package, including project area photos, management plan, simple application form, and project maps.

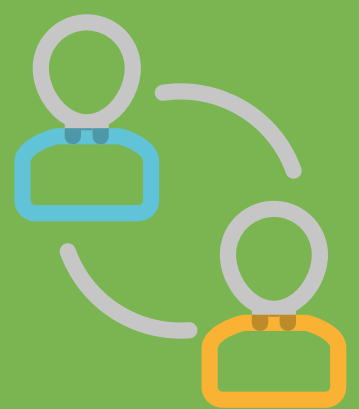


### STEP 4: REVIEW PROCESS

#### AWARD ANNOUNCEMENTS:

**MAY 15 & OCTOBER 30, ANNUALLY**

If approved by our inter-agency team, you will receive a letter of approval from the Texas A&M Forest Service, at which time you are free to implement reimbursable practices.



### STEP 5: INVOICE & VERIFICATION

#### AS MUTUALLY CONVENIENT

Following completion of approved practice(s), contact your project manager to schedule a site visit. At this visit, the project manager will verify project completion and take post-treatment photos.



### STEP 6: REIMBURSEMENT!

#### ALLOW 20-30 BUSINESS DAYS

Once the project manager has confirmed practice completion and received your request for reimbursement, he/she will submit a reimbursement request to the Texas A&M Forest Service. You should receive your check within 30 business days!

